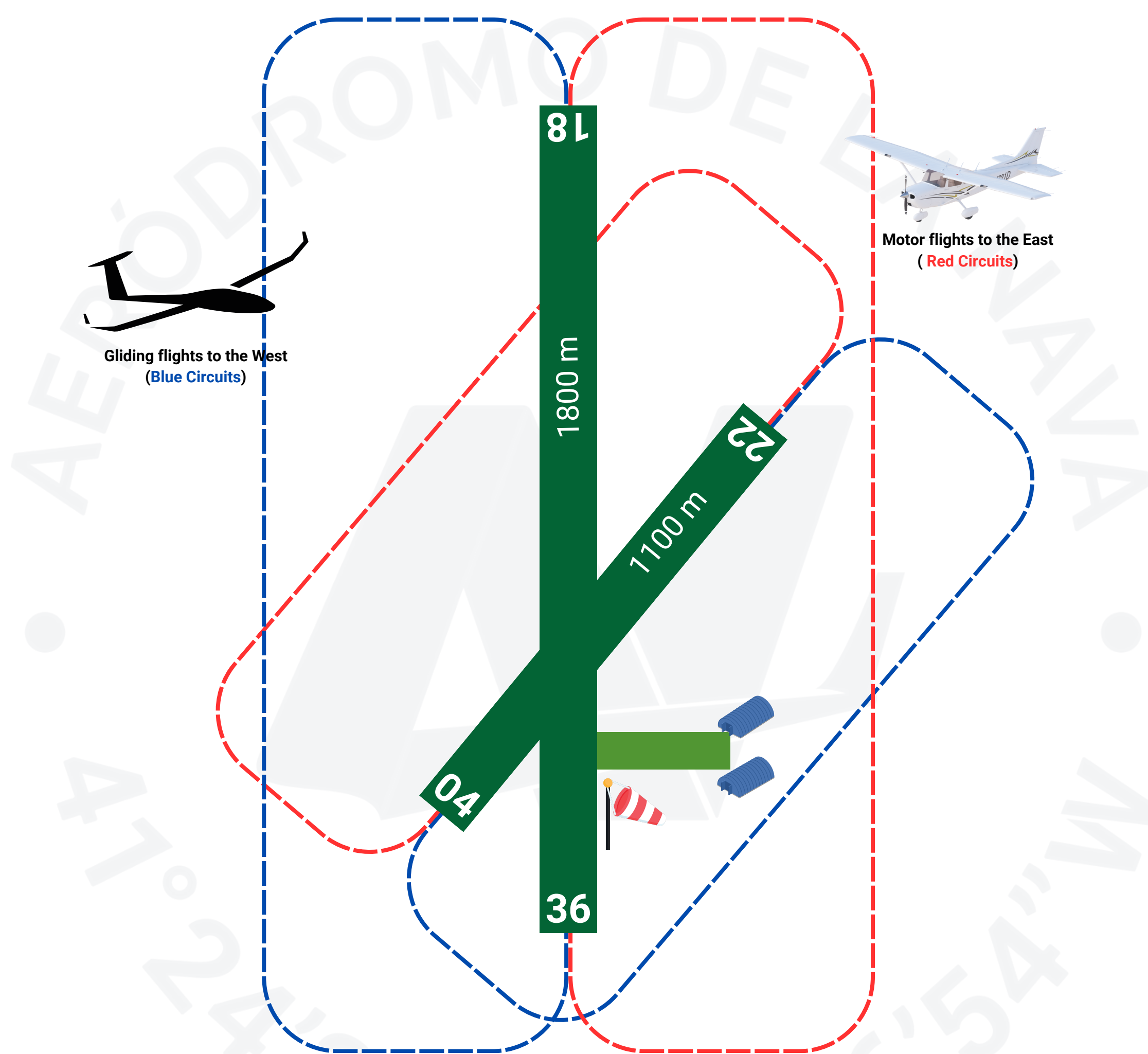


La Nava, Corral de Ayllón (Segovia)

LECA	Radio: 123,500	Elev. (ft / m) 3.363 / 1025	Lat: 41° 24,448' N Long: 3° 36,754' W
Uncontrolled airfield	Runway: 18/36, 04/22	Surface: Grass	Phone: +34 640 940 851



VFR Procedures

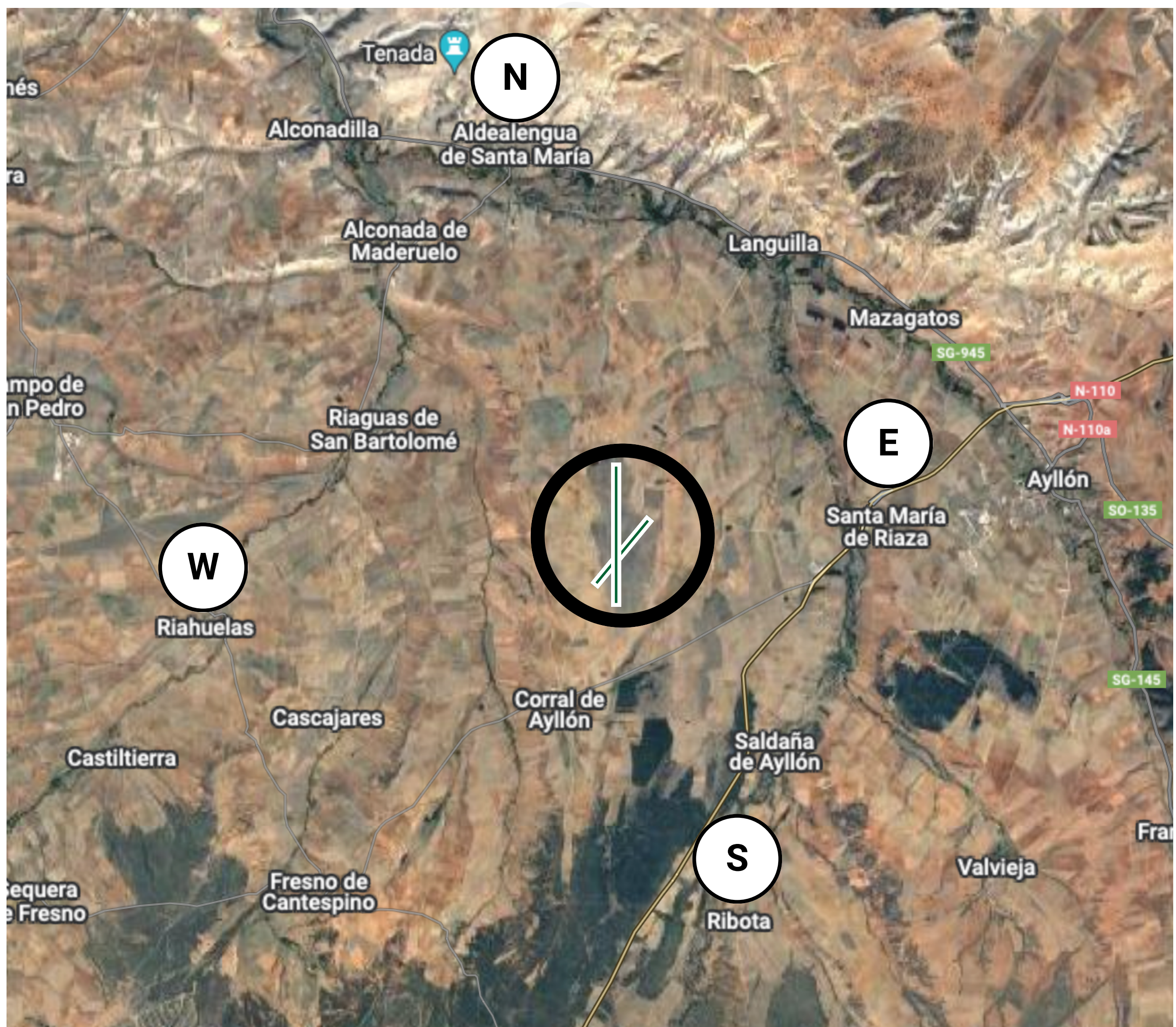
- Motor circuit to the East 800 ft AGL 18/36
- Motor circuit to the North 800 ft AGL 04/22
- Gliding circuit to the West 800 ft AGL 18/36
- Gliding circuit to the South 800 ft AGL 04/22
- Always communicate by radio, phone or WhatsApp intention to land.
- **Attention:** Restricted activities, NOTAMs or parachutists.

Services

- Distance from village Corral de Ayllón 2km.
- Bar
- Gasoline 95 (E5)
- Open from sunrise to sunset
- Free of landing fees

La Nava, Corral de Ayllón (Segovia)

LECA	Radio: 123,500	Elev. (ft / m) 3.363 / 1025	Lat: 41° 24,448' N Long: 3° 36,754' W
Uncontrolled airfield	Runway: 18/36, 04/22	Surface: Grass	Phone: +34 640 940 851



Notification Points

- N - Aldealengua: 41.46183806661344, -3.466793787245491
- S - Ribota: 41.36519481164025, -3.4291520200024426
- E - Santa María de Riaza: 41.41450332975522, -3.4047052157650866
- W - Riahueltas: 41.40162421670033, -3.5192393178931742